



## *The Heart of Mullaloo*

### IMPORTANT DATES...

#### Wednesday 26<sup>th</sup> February

Board meeting 6pm, staffroom.

#### Thursday 27<sup>th</sup> February

Clean up Australia, School Clean up Day.

#### Friday 28<sup>th</sup> February

**SCHOOL DEVELOPMENT DAY**  
Students do not attend.

#### Monday 2<sup>nd</sup> March

**LABOUR DAY – public holiday.**

#### Friday 6<sup>th</sup> March

Year 6's Parent assembly.

#### Attachments with this newsletter

Parent Term one planner.  
Governor Stirling SHS. Approved  
Specialist programs, parent information evening.  
Helen O'Grady Drama Academy enrolment, flyer.

Dear Parents & Carers,



The introduction of Connect as the consistent communication platform used across the school is progressing. Most parents should have received their unique "p" number which will allow them to log in and this will give them access to all of their children's classrooms. This is a new system that the administration and teachers are still becoming familiar with. We have had a few inevitable glitches but are working hard to get everyone connected as soon as possible. Please be patient while we establish routines and become more familiar with the functionality of the platform. Connect has some terrific functions that we will roll out as the year goes on. Let us know if you are experiencing difficulties and we do our best to sort things out as quickly as possible.

#### P&C AGM

Wednesday evening was the Mullaloo Beach P&C Annual General Meeting for 2020. The nomination and election of Office Bearers took place and we are very grateful to those who put their names forward to undertake positions. The work that the P&C does in the school benefits every child and we ask our community to support the P&C as much as they can during the course of the year. The P&C's efforts in recent years has seen: -

- significant improvement to the children's play areas,
- the upgrading of the schools reading resources,
- significant contributions to help with the costs of school camp,
- the upgrading of our ICT resources,
- support for the school in our sustainability initiatives,
- support for cyber safety awareness and much more.

They have also been tireless in building and supporting our community with the canteen service, Mother's and Father's Day stalls, welcome morning teas for new families and family fun days.



You can support the P&C by:

- getting involved in one or more fund raising projects throughout the year.
- Coming along to the events that they organise.
- Using the school canteen when you can.
- Volunteering to be a class P&C Rep.
- Coming along to a meeting or two and having your say.

The P&C has a number of events planned for this year and the success of these events is dependent on support from our community. Be sure to check out the P&C Facebook page to see what is coming up.

Office holders this year are:-

**President** Billy Jarman  
**Vice President** Gemma Jones  
**Treasurer** Nicola Wood  
**Secretary** Sasha Mignon  
**Executive Committee** Faye Turner, Theresa Hawkins, Lauren Hogan  
**Classroom Reps** Still to be determined

We would like wish the P&C committee all the best for the year.

*Mike Black*

**PRINCIPAL**

#### TERM DATES 2020 (for students)

<b>Term 1</b>	Monday 3 February	to	Thursday 9 April
<b>Break</b>	Friday 10 April	to	Sunday 26 April
<b>Term 2</b>	Wednesday 29 April	to	Friday 3 July
<b>Break</b>	Saturday 4 July	to	Sunday 19 July
<b>Term 3</b>	Monday 20 July	to	Friday 25 September
<b>Break</b>	Saturday 26 September	to	Sunday 11 October
<b>Term 4</b>	Monday 12 October	to	Thursday 17 December

OFFICE HOURS - 8.30am to 3.30pm

#### SCHOOL DEVELOPMENT DAYS - 2020

Children do not attend on these days:

**TERM 1** Thursday 30 January, Friday 31 January, Friday 28 February, Friday 10 April (Public holiday- Good Friday)

**TERM 2** Monday 27 April (Public holiday -ANZAC Day) Tuesday 28 April.

Monday 1 June (Public Holiday-WA Day)

**TERM 4** Friday 30 October, Friday 18 December.

#### BELL TIMES

**MONDAY, TUESDAY, THURSDAY, FRIDAY (WEDNESDAY - Please note – EARLY CLOSE at 2:30pm)**

<b>8:45 - 11:00</b>	<b>Lessons commence</b>
<b>11:00 - 11:20</b>	<b>RECESS</b>
<b>11:20 - 12:20</b>	<b>Lessons</b>
<b>12:20 - 12:35</b>	<b>EATING LUNCH</b>
<b>12:35 - 1:00</b>	<b>PLAY</b>
<b>1:00 - 3:00</b>	<b>Lessons</b>





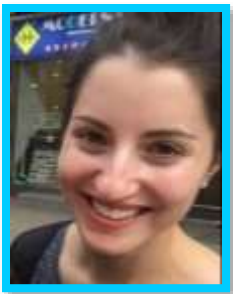
### CLEAN UP AUSTRALIA, SCHOOL CLEAN UP DAY

Next Thursday, February 27<sup>th</sup>, MBPS will participate in this fantastic initiative from *Clean Up Australia*. Every class, from Years 1-6, will clean up a section of the school or surrounding bushland. This is a hands-on opportunity for students to appreciate the extent of the litter problem and to be actively involved in citizenship.

Students will start the clean-up at 1pm and parents are very welcome to come and help.

Parents should report to their child's classroom if they are able to attend.

**Please send your child with some cheap gardening gloves and sunscreen if possible and we hope to see you there.**



## Chaplain's Corner

Dear Parents and Carers

Welcome to a new school year and that you have had a great start to term one.

In term one, I am looking forward to continuing some past programs and running new ones. I will be running a mentoring program where some mentors will be invited in to the school and run activities and games with the students. They will discuss important topics on self-esteem, confidence, resilience, goal setting and friendships.

'Bullying No Way! Day' is an important event at our school and is coming up in a few weeks. The theme for 2020 is 'Take Action Together'. I will be organising some activities in the classes, as well as a guest speaker for the students. We will keep you posted.

Please see the following article on 'Relationships with school-age children: ideas and tips' by the Raising Children Network, suitable for parents of children 5-8 years old.

*Warm, stable and responsive relationships are fundamental to children's development and wellbeing. Your child will become more independent when he starts school, but family relationships are still the biggest influence on his development. That's because your child's relationship with you helps him feel secure and gives him confidence. This security and confidence is important as your child meets new children, tries new things and takes on new responsibilities when he's ready.*

<https://raisingchildren.net.au/school-age/connecting-communicating/connecting/connecting-with-your-school-age-child>







## Note from the Community Health Nurse

Welcome to the new school year. My name is Andrea Zulch and I am the Community Health Nurse who visits your school. Community Health Nurses work in schools to promote healthy development and wellbeing so students may reach their full potential. A major part of my work is focused on early intervention and the School Entry Health Assessment program. Community Health Nurses serve as a health contact point for children and their families, providing information, assessment, health counselling and referral. The services provided are free and confidential.

If you have a concern about your child's health or development, please contact me on **0409 067 441**.

### COLOUR BLINDNESS

Colour blindness means that a person cannot distinguish some colours or see the colours differently to other people. Very few people who are colour blind are 'blind' to all colours. Commonly, the colours seen differently are greens, yellows, oranges and reds.

An information leaflet on colour blindness will be distributed to all year Pre-primary students in term one. Please take the time to read the pamphlet.

For more information and on Colour Blind Awareness and Support Group click onto the link:  
<http://www.members.optusnet.com.au/~doverton/>

If you have any concerns, colour vision testing can be performed by some general practitioners, eye specialists or optometrists. You can also contact your local Community Health Nurse, **Andrea Zulch** on **0409 067 441**.

Regards,

**Andrea Zulch**

Clinical Nurse

Child and Adolescent Health Service | Joondalup Region

P. O. Box 590

Joondalup, 6919

**Ph: 9400 9500**

**Mobile: 0409 067 441**

**E: [andrea.zulch@health.wa.gov.au](mailto:andrea.zulch@health.wa.gov.au)**

**W: [health.wa.gov.au/cahs](http://health.wa.gov.au/cahs)**





IMAGINE, CREATE, ACHIEVE

Gifted and Talented Academic Selective Program

**Approved Specialist Programs:** Artsmedia | AFL Football | Engineering

*Committed to success for all students*

*Kaatadjin danjoo*

**T** 6274 0300 **W** [www.govo.wa.edu.au](http://www.govo.wa.edu.au) **F** [www.facebook.com/governorstirling](https://www.facebook.com/governorstirling)

Governor Stirling Senior High School is holding a parent information evening regarding their Approved Specialist Programs followed by a school tour on **Wednesday 18 March 2020 at 6 – 7 pm.**

**What:** Approved Specialist Programs Information Evening and Tour

**Where:** Governor Stirling Senior High School – Auditorium

**Address:** 25 Third Avenue, Woodbridge, 6056

**When:** Wednesday 18 March 2020, 6 – 7 pm.

**Who:** All Year 5 and 6 Parents and their student interested in joining an Approved Specialist Programs at GSSHS. Applicants can be both local or from out-of-bound areas.

**RSVP:** Bookings are essential by Monday 16 March, through <https://www.trybooking.com/BIJJM>

### Approved Specialist Programs

Year 7 places are now open for 2021.

[Apply NOW for Approved Specialist Programs via the school website www.govo.wa.edu.au;](http://www.govo.wa.edu.au)

- Specialist Arts media
- Specialist Engineering
- Specialist Australian Rules Football

**Applications close on Thursday 9 April at 3:00pm sharp 2020.**

**\*Approved Specialist Programs are available to all students living both inside and outside our local intake area.**

Kind Regards,

Diana McRobert

**Media & Marketing Officer**

GOVERNOR STIRLING SHS

25 Third Avenue

Woodbridge WA 6056

6274 0300 MON – WED







# 40 YEARS OF DRAMA!

Boost Confidence

Increase  
Self Esteem

Learn Life Skills

Improve  
Communication

Develop  
Drama Skills



- KINDY DRAMA 3 - 5 YRS
- LOWER PRIMARY 5 - 8 YRS
- UPPER PRIMARY 9 - 12 YRS
- YOUTH 12 - 17 YRS

**WEEKLY CLASSES  
ENROLLING NOW**

- AVELEY ● CURRAMBINE ● DUNCRAIG ● GREENWOOD
- KALLAROO ● KINGSLEY ● KINGSWAY ● QUINNS ROCK

**PH. 9402 8744**

Justin.Lowson@helenogrady.net.au

**www.helenogrady.net.au**

